

what do we teach?

how do we learn?

where do we learn?

who do we learn from?

who do we learn with?

curriculum

pedagogy & didactics

building management & operations

professional development

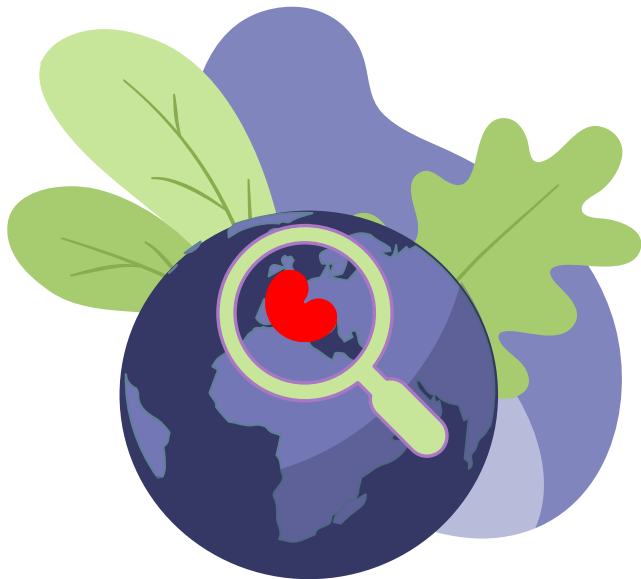
school environment

GREEN CHANGE MAKERS!



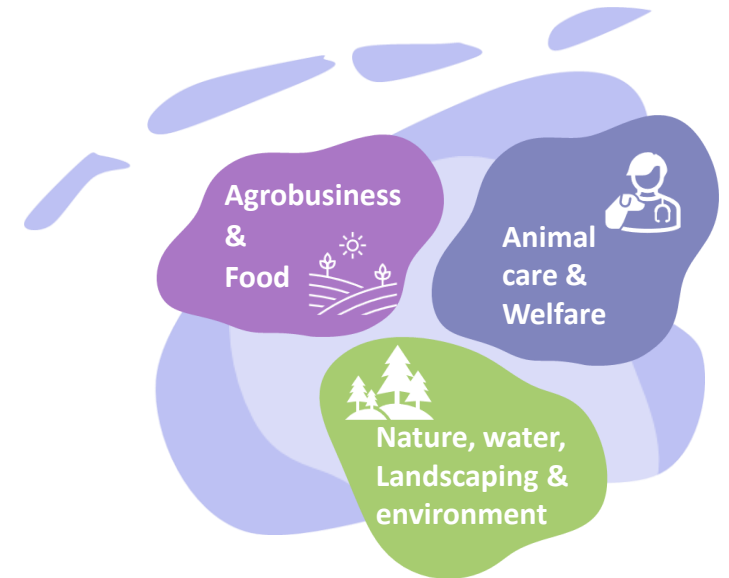
# What is Whole School Approach (WSA)?

*The Whole School Approach to Sustainable Development is a framework that supports schools in giving shape to education for a sustainable future, in consultation with all stakeholders and interested parties in and around the school.*

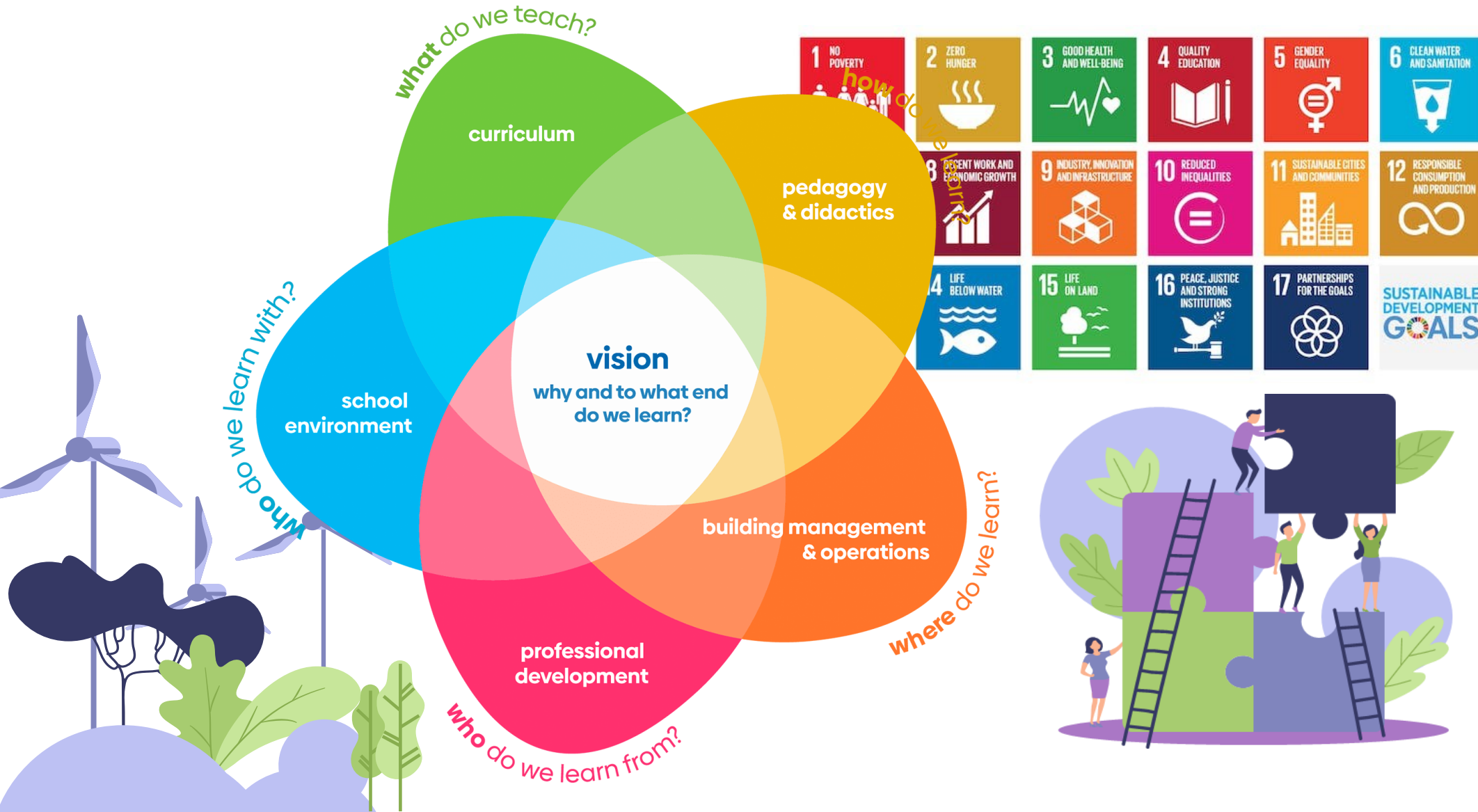


The WSA helps us:

- to integrate sustainability issues structurally and coherently into the school organization.
- to embed sustainable development in all educational processes that affect learning.



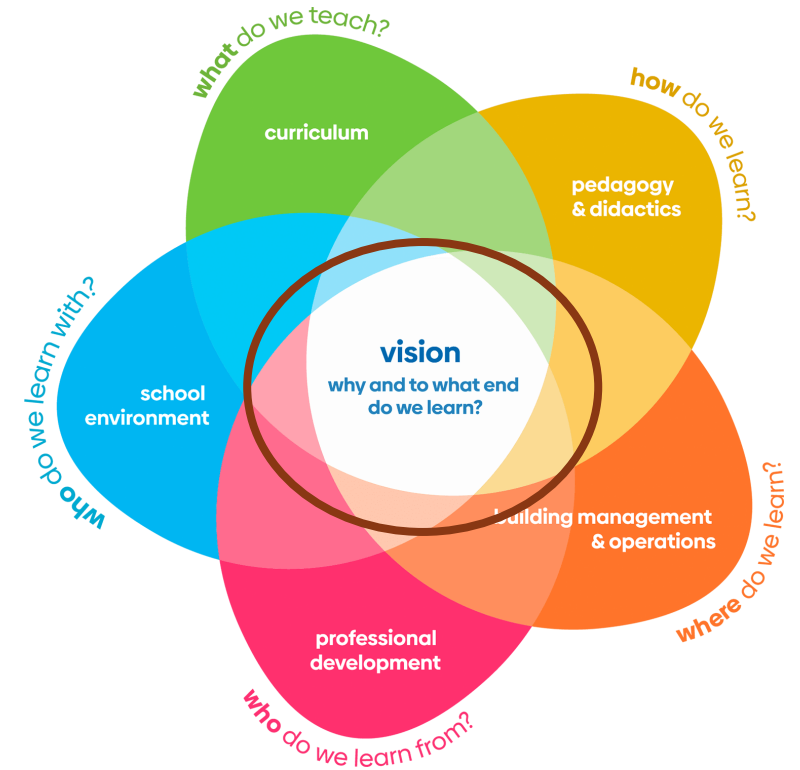
The WSA focusses on realization of the UN Sustainable Development Goals (SDGs).



# Vision

## Why and to what end do we learn?

- What do we find important when we talk about a sustainable society?
- How do we ensure a living vision, in which we, together with young people and other stakeholders, regularly reflect on our goals and ambitions?
- How do we involve our pupils, students and other stakeholders in creating our vision?



**Our vision on education is: ....**



# Green changemakers

*“Our students are the professionals and citizens of the future;*

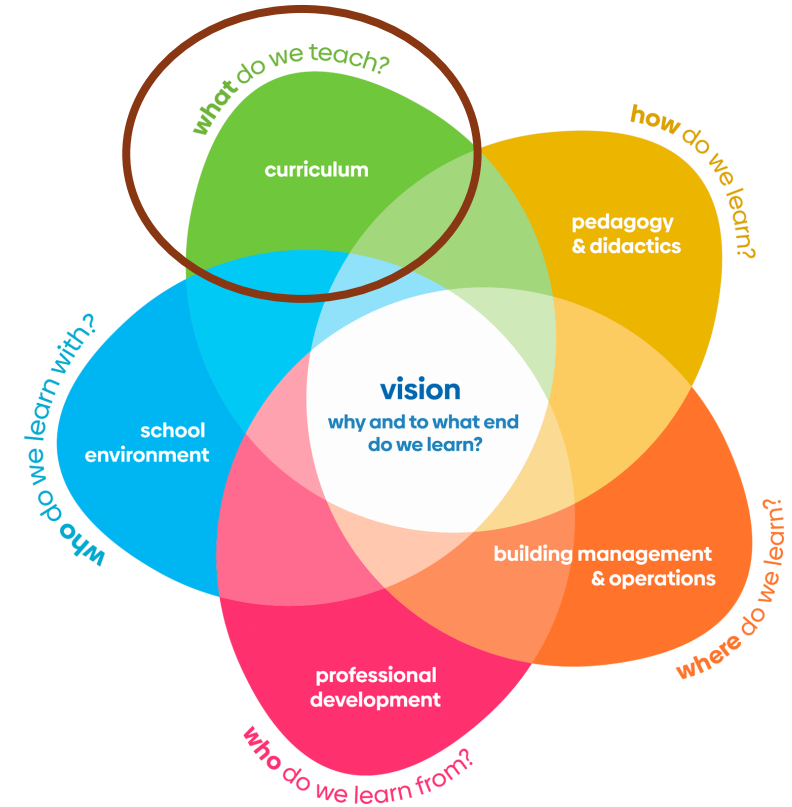
*the change makers for a healthy living environment in which they make a positive contribution to healthy soil, rich food, clean water and a circular economy”.*



# Curriculum

## What do we teach?

- What sustainability themes do we think important and which are already structurally addressed in our curriculum?
- How can we ensure that we always make a connection to the experiences and the perception of young people?
- What do young people themselves want to learn about sustainability?



**Our curriculum becomes: ...**

**What we have to do is: ...**



# Green changemakers

## Vision

*At Aeres MBO-Leeuwarden we use everyone's strength to develop each other's talents and to contribute with passion and ambition to a thriving society of today and that of the future.*



Masterplan MBO Leeuwarden 2022-2027



### Healthy soil and rich food

We contribute to the importance of food and nature as a source of global health.



### Clean water

We contribute to sustainable solutions for clean water and future-proof water management.



### Nature, people, animals and living environment

We contribute to the well-being of nature, people, animals and the living environment.



### Circular life and to work

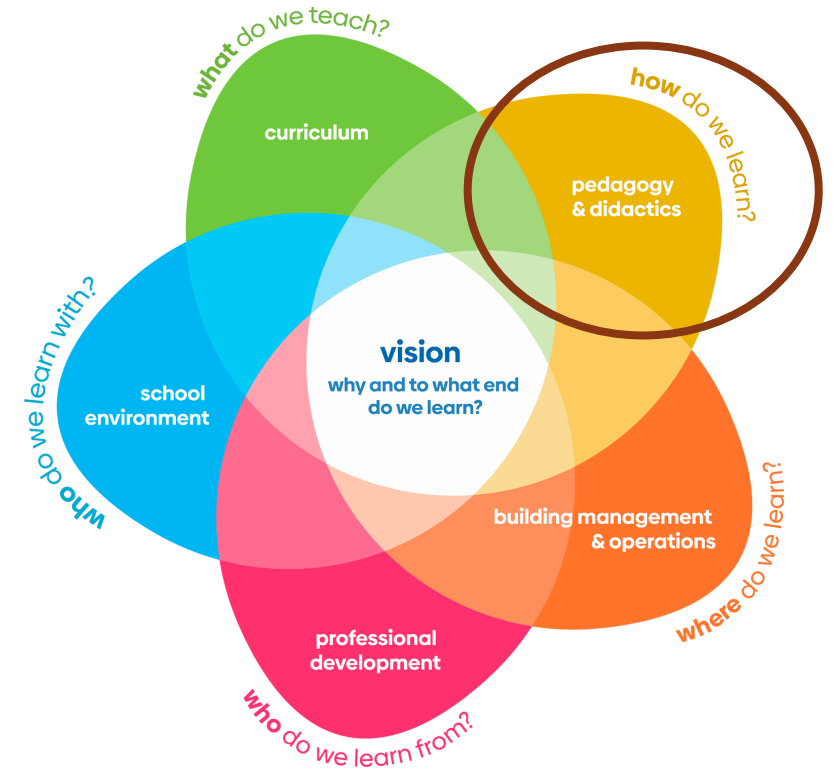
We contribute to a thriving society with self-healing and reusable materials/capacities of our earth.



# Pedagogy & Didactics

## How do we learn?

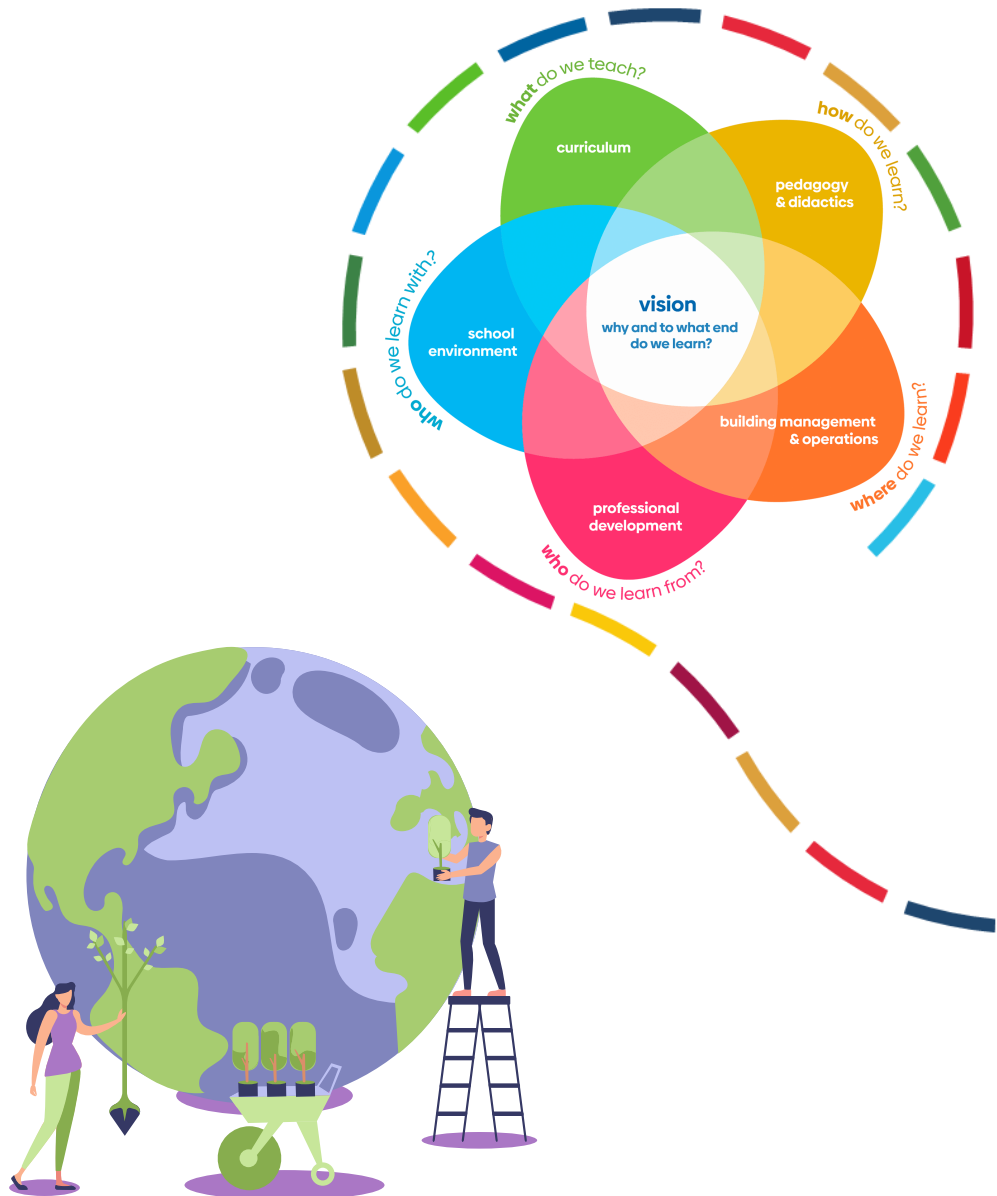
- How do we create a learning environment where young people can respond to what is going on in the world?
- How do we stimulate the creativity, entrepreneurship and talents of young people?
- How do we help our pupils and students to discover what is going on in the world?



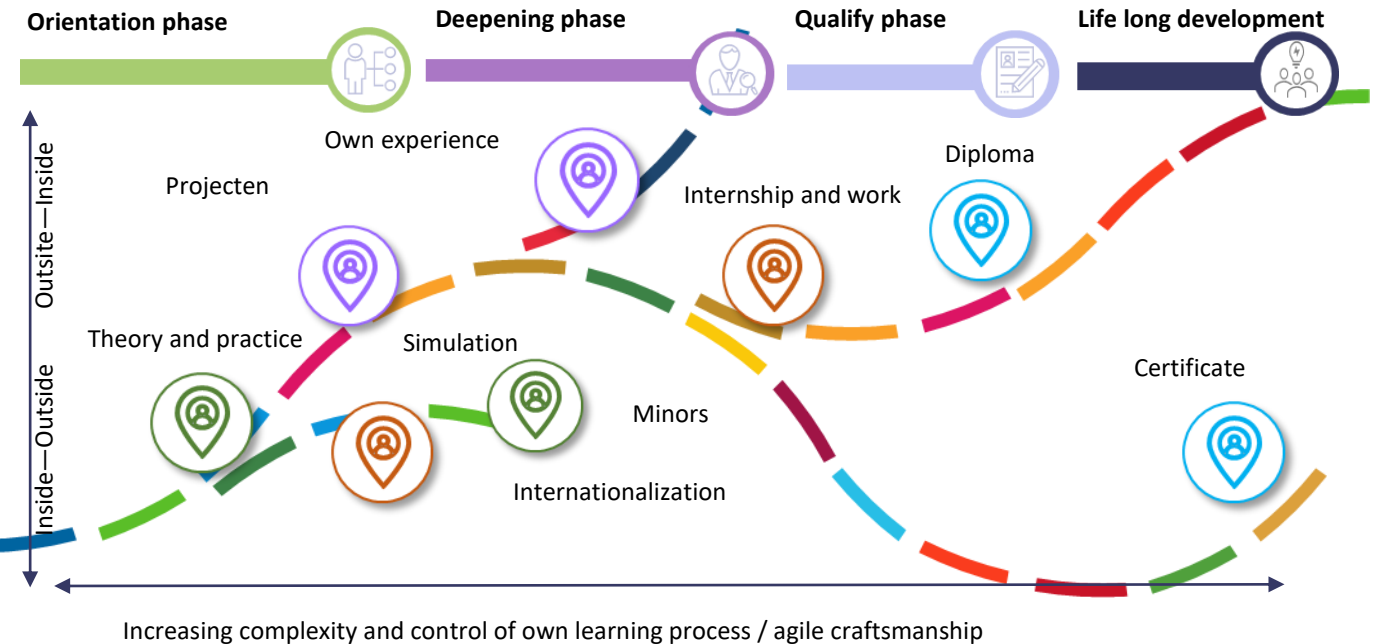
**Our approach to guiding students is: ...**  
**We have the following to do: ...**



We teach people **to be agile, to be resilient and inclusive**. They receive guidance and personal development coaching, citizenship and craftsmanship. This means that we provide education based on career guidance. **This includes the ownership of the student (what does he/she want to learn) is central.**



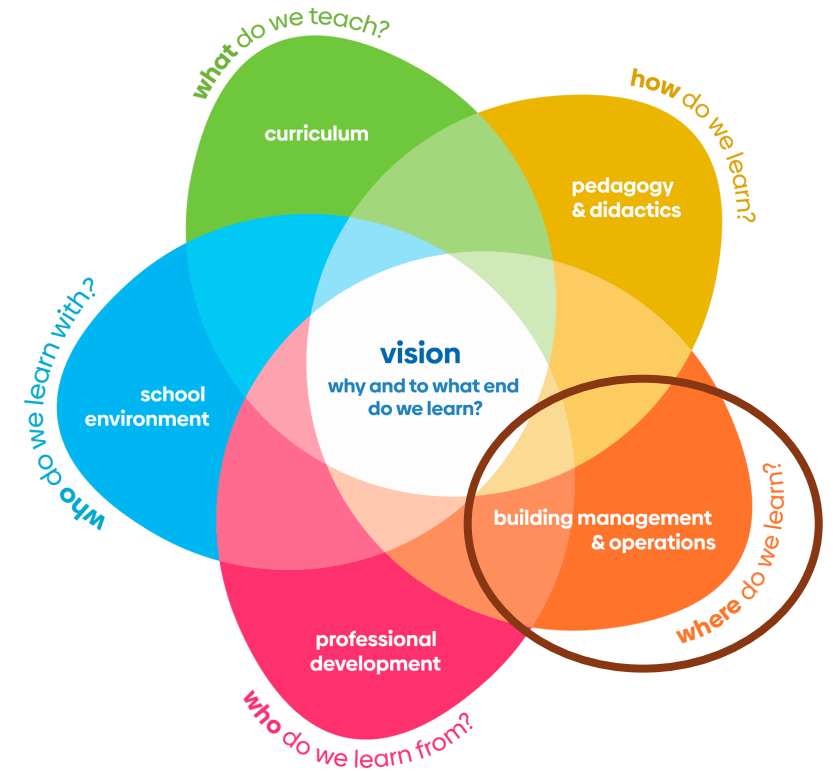
### Hybrid learning environment with meaningful projects



# Management & Operations

## Where do we learn?

- What opportunities are there for our pupils and students to learn from and to contribute to sustainable school operations?
- How do we give voice to the ambitions and wishes of pupils and students with regard to making the school and its surroundings more sustainable?
- How do we communicate what we are doing to students, to (new) colleagues and to visitors?



**We organize our education: ...**

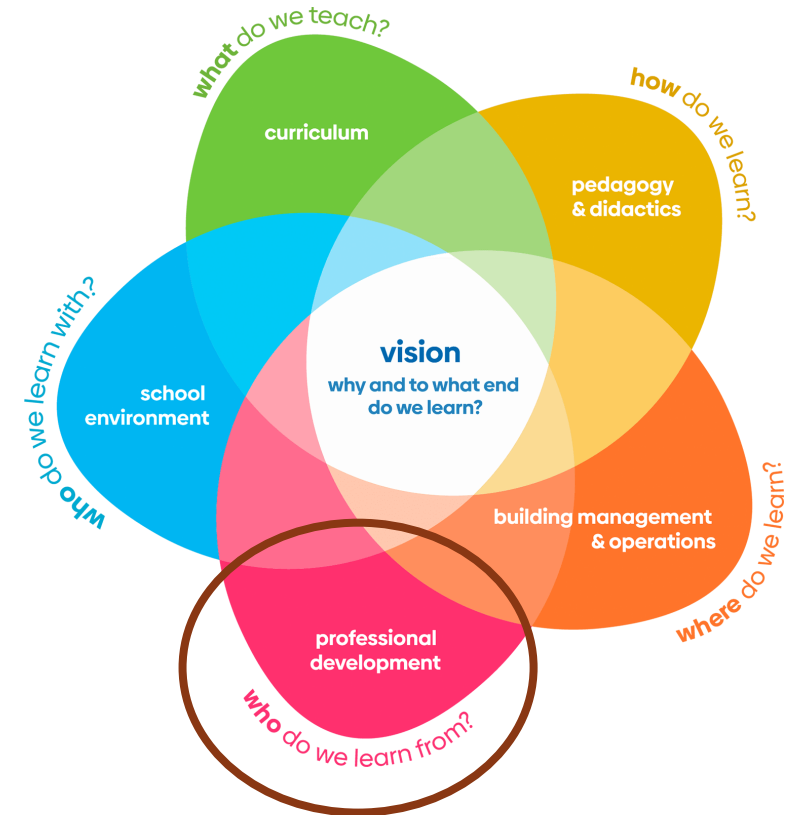
**We have the following to do: ...**



# Professional development

## Who do we learn from?

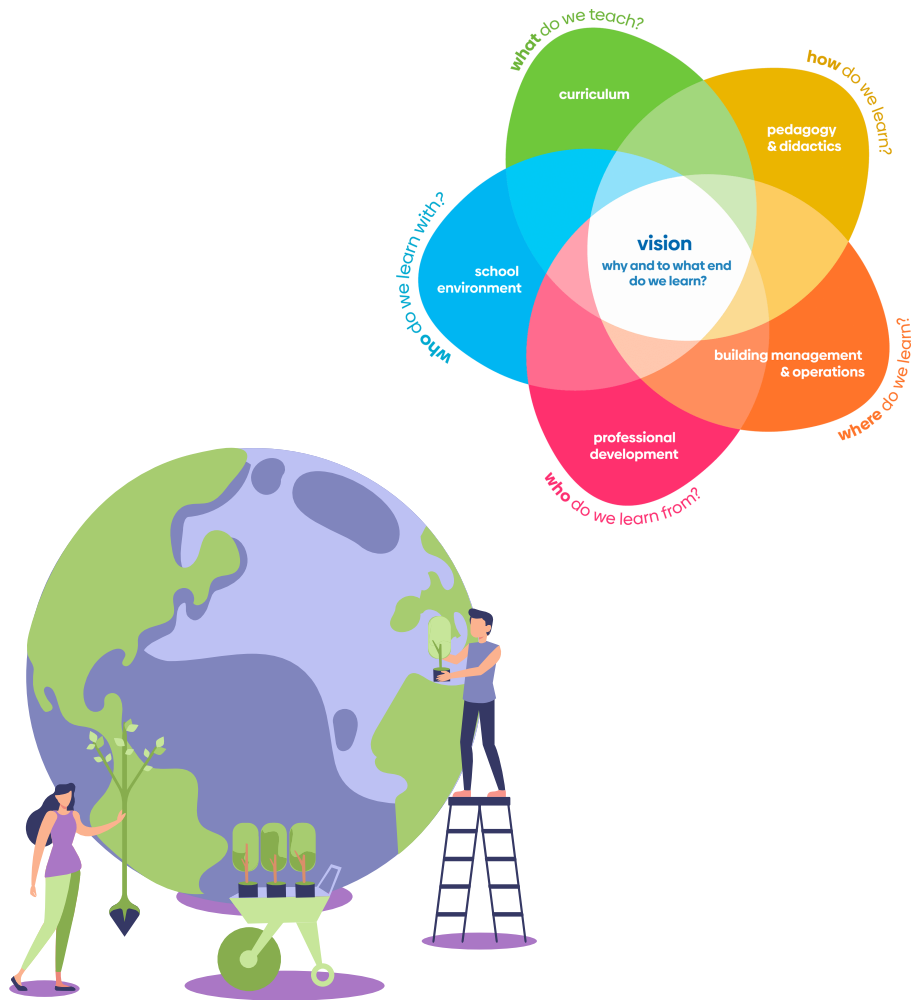
- What knowledge, skills and talents for ESD do we already have?
- Are we up to date with sustainable developments in our fields/subjects?
- Are we up to date with sustainable developments in our fields/subjects?



**Our professional development consists of :**

**We have the following to do: ...**





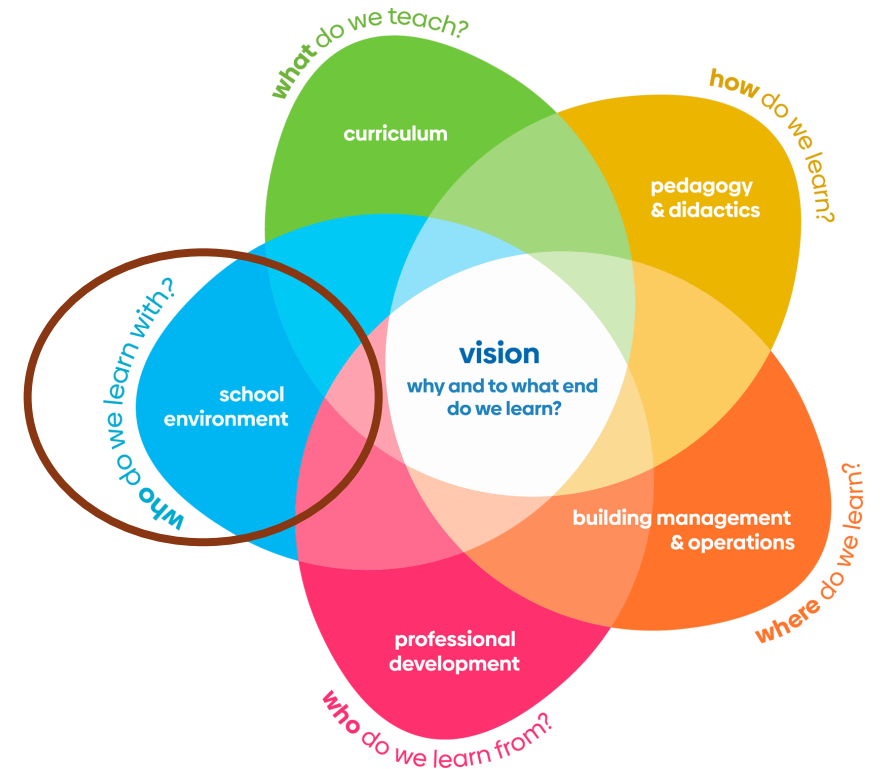
## WHO WE ARE AS EDUCATORS?

We profile ourselves as a **community of learning and practice**. We educate our students who are aware of the issues of the 21st century and their contribution to it. That is why we are adopting **hybrid learning environments** to allow our students to come into contact as much as possible with what is going on in society and the labor market.

# School environment

## Who do we learn with?

- What does our network look like and how can we involve partners into learning for sustainable development?
- How as a school can we assure we are easily approachable for companies and organizations in the region?
- Do we structurally offer young people the opportunity to contact partners and to work together on regional sustainability issues?



**Our rich, meaningful learning environment looks like this: ...**

**We have the following to do: ...**





Aeres MBO Leeuwarden is part of a strong regional network of all kinds of companies, that are connected to Vereniging Circulair Friesland

# Whole School Approach Finally - your assignment!

Please fill in:

**Vision: We stand for...**

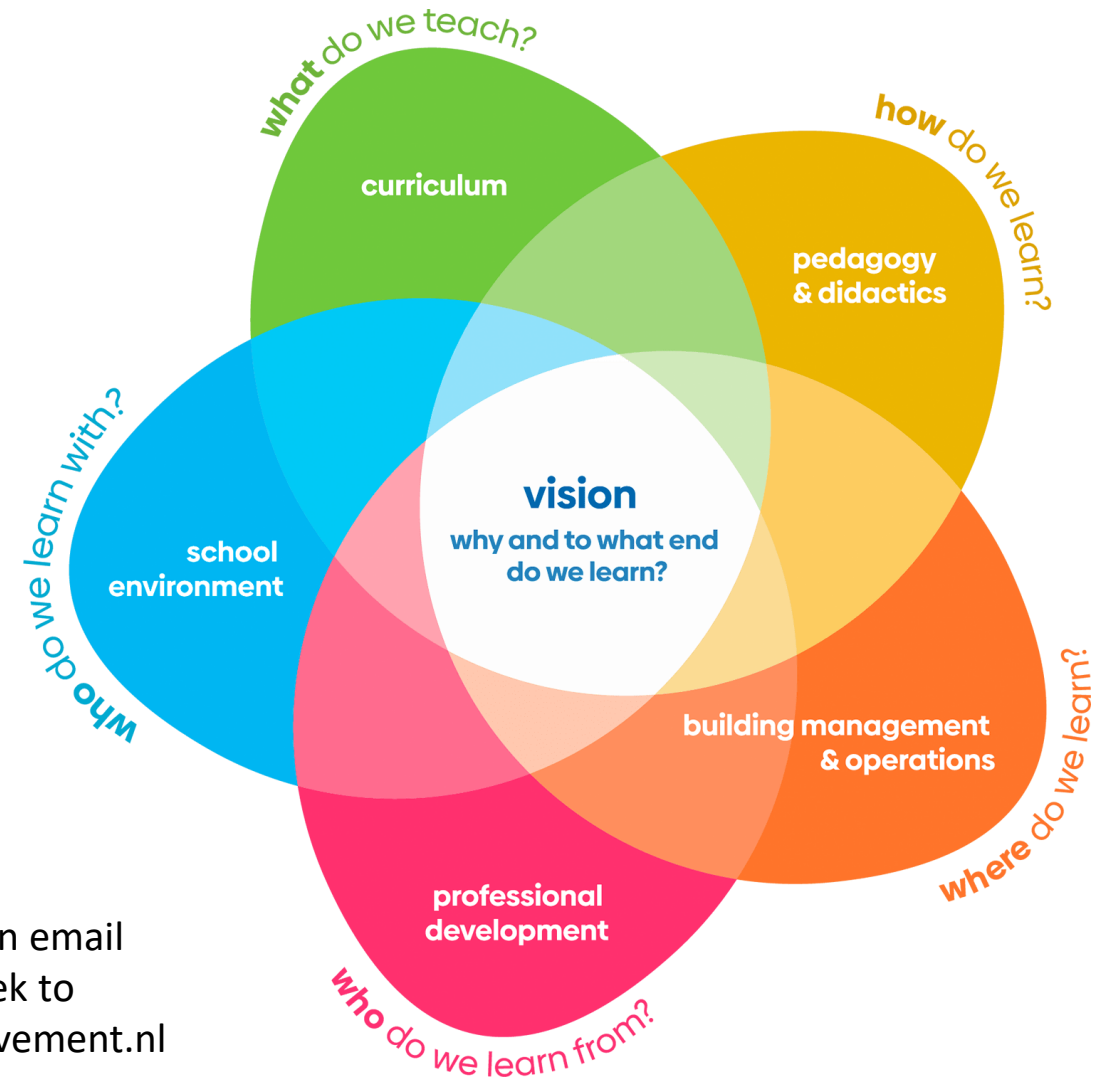
**Curriculum: We realize this by...**

**Pedagogy & didactics: The student notices that because...**

**Operational management: We organize that ...**

**Learning environment: Therefore we involve...**

**Professionalization: We ourselves then have to ...**



If you wish, you can email  
your idea next week to  
[info@sparkthemovement.nl](mailto:info@sparkthemovement.nl)

